



exatron
excellence in electronics

Model 8000-Ping-Pong

Dual Operation Pick-and-Place Handler



- *Throughput of two handlers*
- *Footprint of one handler*
- *Just 25% additional cost*
- *Each side can be set up independently for different devices*

System Features

- Two sets of thermal heads (ambient/cold/hot on each)
- Two cameras; two separate inspections configured differently but running concurrently; for both before & after test
- Two golden unit trays with pockets for several device sizes
- Two independent test sites
- Four trays for separate input & output
- One pickup car with 4 pickup nozzles ping-pongs between the 2 sides, alternately serving each side
- GUI Windows-based control software
- Software for remote service & software updates
- Lift-off doors with latches
- Stand-alone welded steel frame; fully enclosed; interlocked
- EMO switches, Run & Halt buttons front & back
- Rack-mounted PC with generic replacement components
- Digital linear and servo motors for precise component handling
- ESD-safe & CE Mark



exatron, 2842 Aiello Dr., San Jose, CA 95111-2154 www.exatron.com
1-800-EXA-TRON 408-629-7600 Fax: 408-629-2832 www.pisockets.com

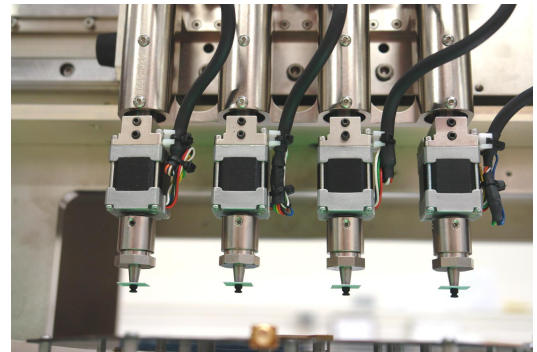
Features



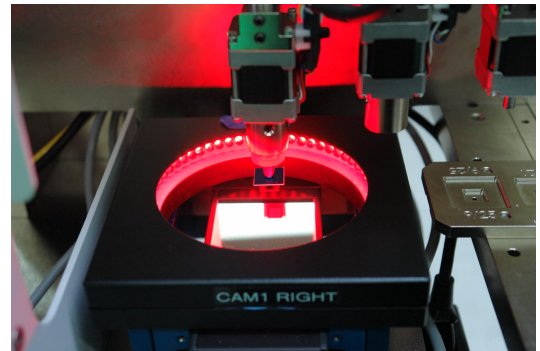
Handler with upper doors open

Operation In Brief

- The 1st or leftmost pickup nozzle gets a device from the leftmost tray input and puts it into the test site on the left side of the handler.
- The 3rd pickup nozzle gets a device from the rightmost tray input and puts it into the test site on the right side of the handler.
- The 2nd pickup nozzle gets the device from the test site on the left side of the handler and puts it into the output tray (2nd from left).
- The 4th or rightmost pickup nozzle gets the device from the test site on the right side of the handler and puts it into the output tray (2nd from right).



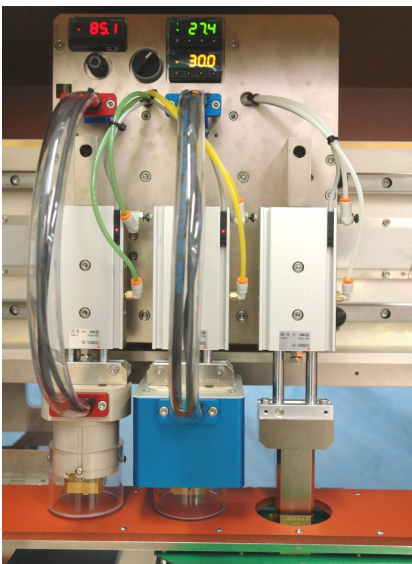
Quad pickup heads with infinite rotation



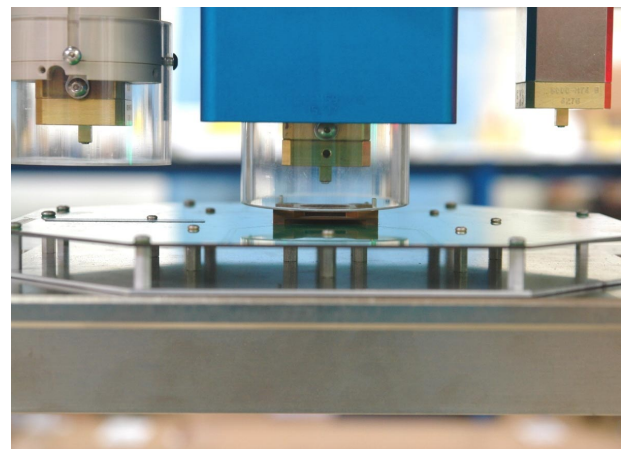
Pickup head with device over inspection camera



Golden unit tray with pockets for various device sizes



Ambient, cold, & hot thermal test heads



Cold head with purge cover descending to test site

