

### System Features & Options

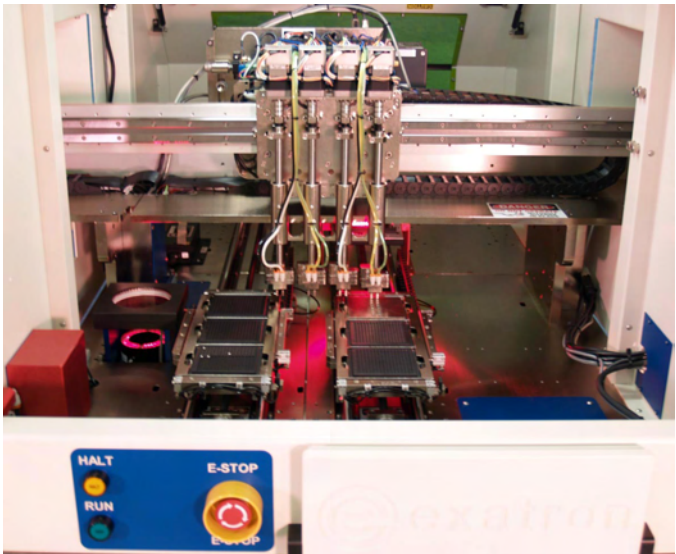
- Two to five JEDEC in/out tray stackers
- Mix & match trays & waffle packs
- Tray/tape/die feeder input; tray/tape output
- One or two pickup cars; up to 16 pickup nozzles
- Multiple RF test sites; up to 16 memory test sites
- GUI Windows-based control software
- Software for remote service & software updates
- Lift-off doors with latches
- Stand-alone welded steel frame; fully enclosed; interlocked
- EMO switches, Run & Halt buttons front & back
- Rack-mounted PC with easy-to-find replacement components
- CDRH Class 1 windows with laser option
- Digital linear and servo motors for precise component handling
- ESD-safe & CE Mark

#### Options:

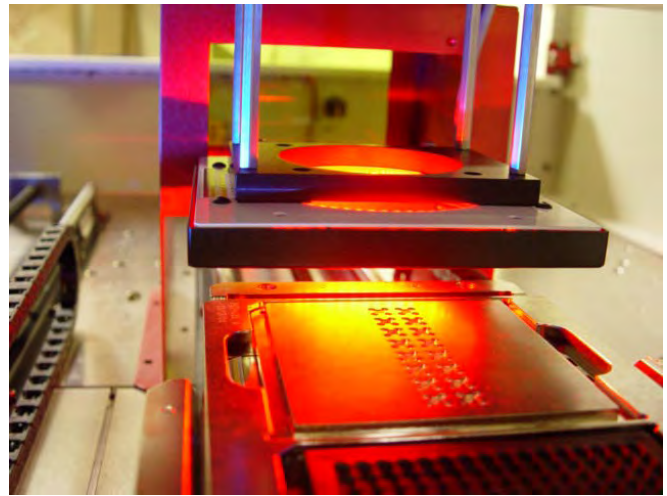
- Multiple pickup heads
- 3-directional pickup heads
- Movable test sites
- Hot/cold/ambient testing,  
+155° C to -55° C
- MEMS testing
- 2D/3D inspection
- Laser marking/welding/ablation
- Large test head
- Custom/large test heads & sites
- Docking hardware



# Options



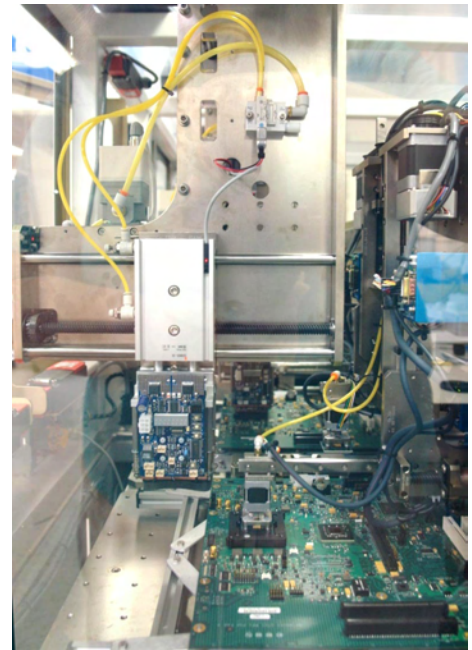
Two inspection sites—before & after laser marking



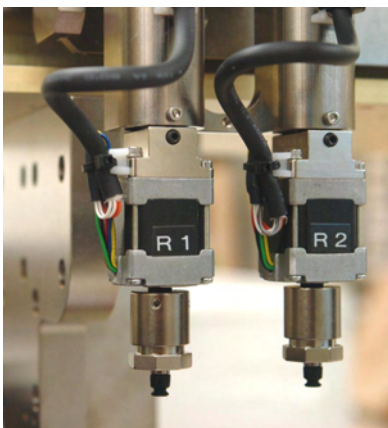
Laser marking & inspection at one site



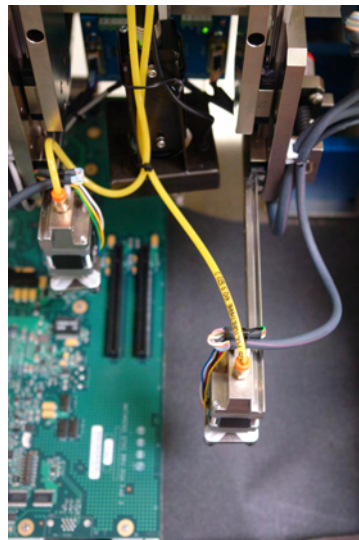
Hot, cold, & ambient thermal test heads



Two-directional test head



Dual pickup heads with infinite rotation



Three-directional, go-anywhere pickup heads



Camera mounted on pickup assembly

