

8

7

6

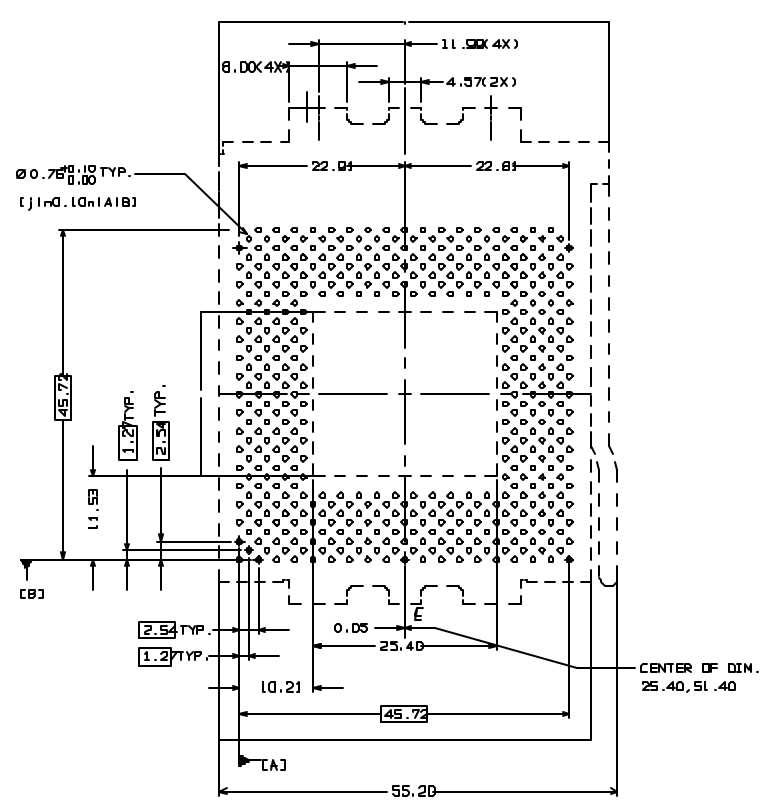
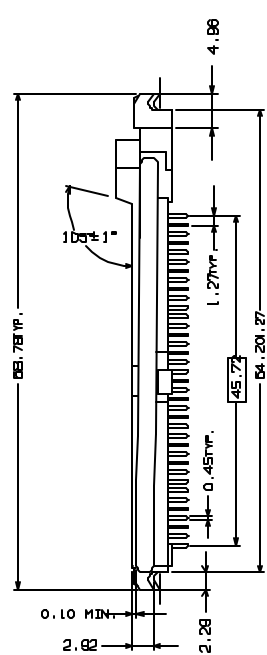
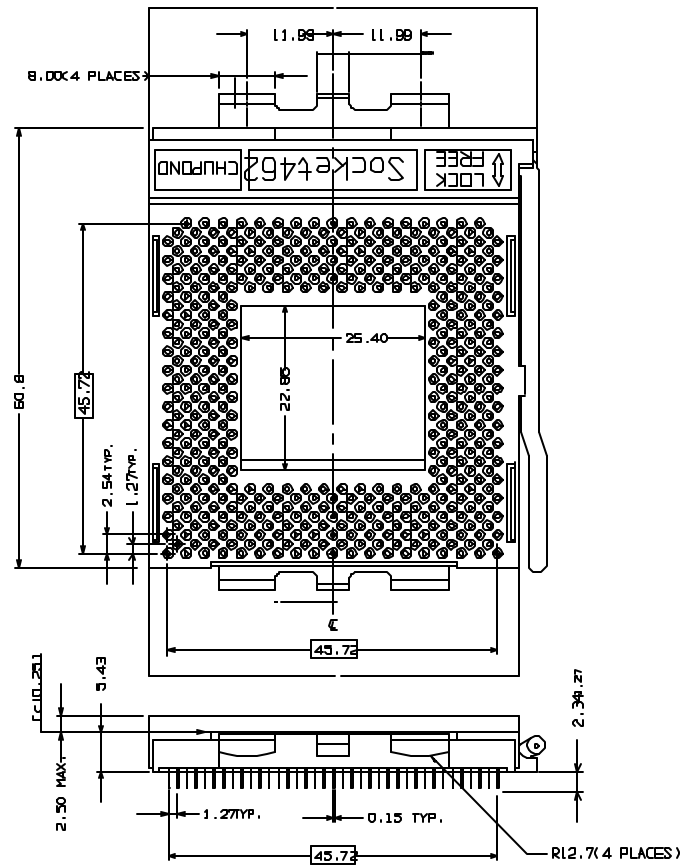
5

4

3

2

1



RECOMMENDED PCB LAYOUT

NOTE

- 1 MATERIAL:
 BASE : REINFORCED THERMOPLASTIC LCP,UL 94V-0 RATED.
 COVER : REINFORCED THERMOPLASTIC LCP,UL 94V-0 RATED.
 CONTACT : HI-STRENGTH COPPER ALLOY.
 ACTUATOR : STAINLESS STEEL ROD.
- 2 CONTACT PLATING:
 * GOLD PLATING IN CONTACT AREA,OVER 50u" NICKEL UNDER PLATING.
 * TIN/LEAD 100u" IN SOLDER TAIL OVER 50u" NICKEL.

3 ELECTRICAL PROPERTIES:

- CONTACT RESISTANCE : DELTA 10 MILLIOHMS MAX.
- CONTACT RATING : 1.5 AMP.
- DIELECTRIC WITHSTANDING VOLTAGE : 1000 VOLTS (RMS) PER EIA-364-TP20.
- INSULATION RESISTANCE : 1000 MEGOHMS MIN. DC 500V PER 364-TP21.

DO NOT SCALE DRAWING

UNLESS OTHERWISE SPECIFIED
 ALL DIMENSIONS ARE IN mm
 TOLERANCES

- .X = +0.25
- .XX = +0.25
- .XXX = +/-

ANGLE : + 3°

DRAWN BY

CHK'D BY

APP'D BY

SCALE NONE

01	PRELIMINARY					LJ,H	000112
LTR	REVISION RECORD	ECR	ECN	DRG	CHK	DATE	

CUSTOMER COPY



CHUPOND

PRECISION CO., LTD.

FILE NAME : 067XX14462-A-CLS

SHEET 1 OF 1

TITLE : Socket 462

DWG. NO. : 067-XX-14462-A

REV 01